



# PATIOSPHERE



## ALUMINIUM PICNIC TABLE **Installation Manual**

# 1. Technical Description

## 1.1. Product Overview

Below are all parts of the system:



### Aluminium Picnic Table Components

01. Leg Profile (x2)

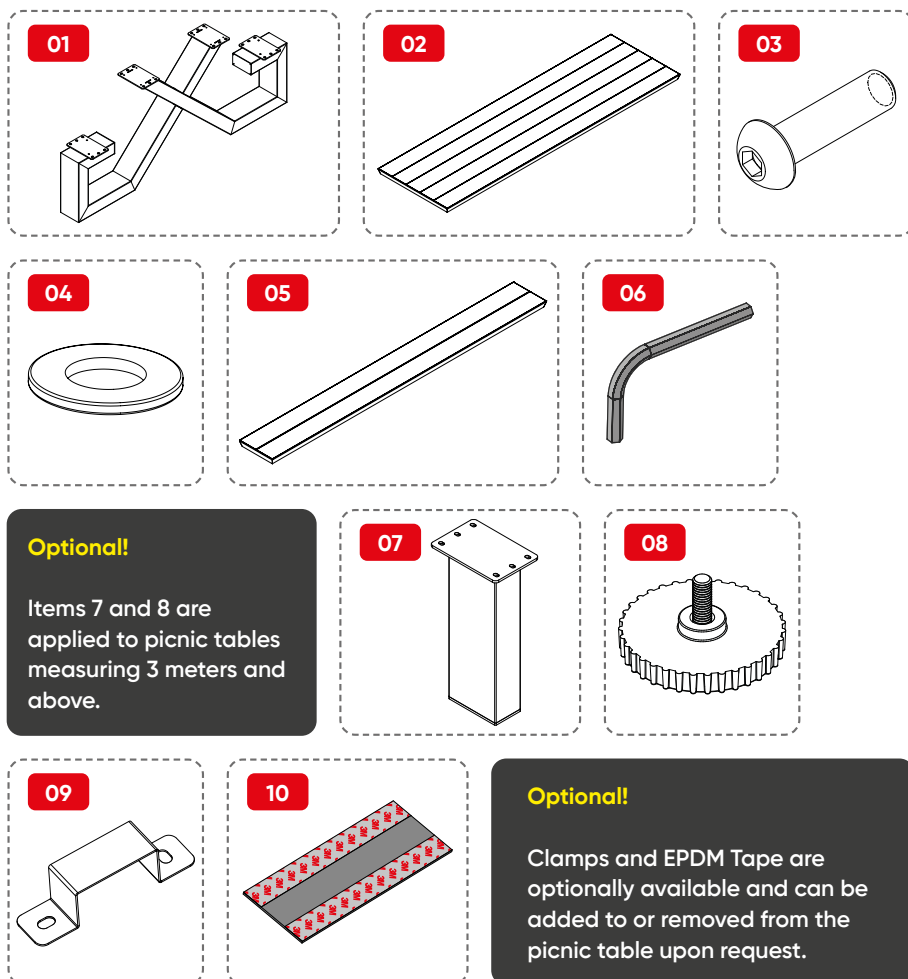
02. Table Top (x1)

05. Table Seats (x2)

## 1.2. Components

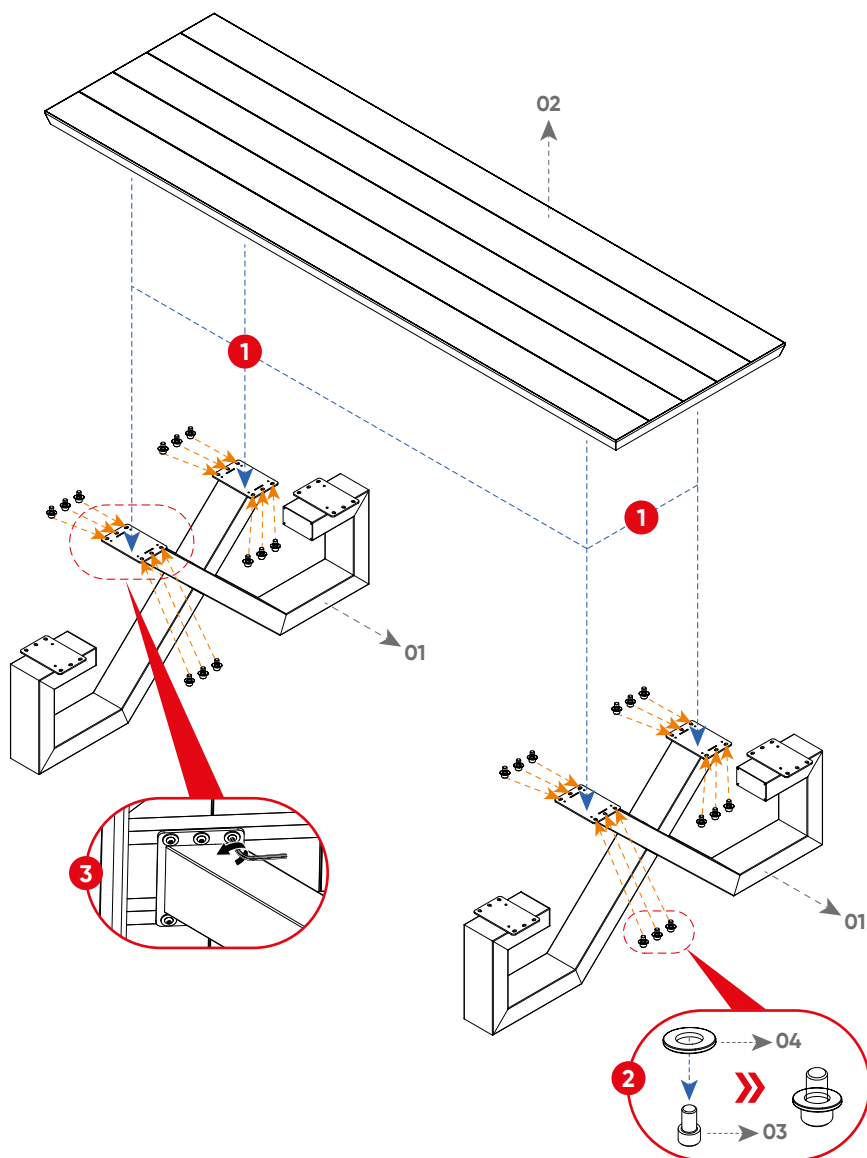
All system parts that can be included in **METALAND PICNIC TABLE** delivery scope are shown below. The exact scope of delivery and the number of special system parts depend on your order.

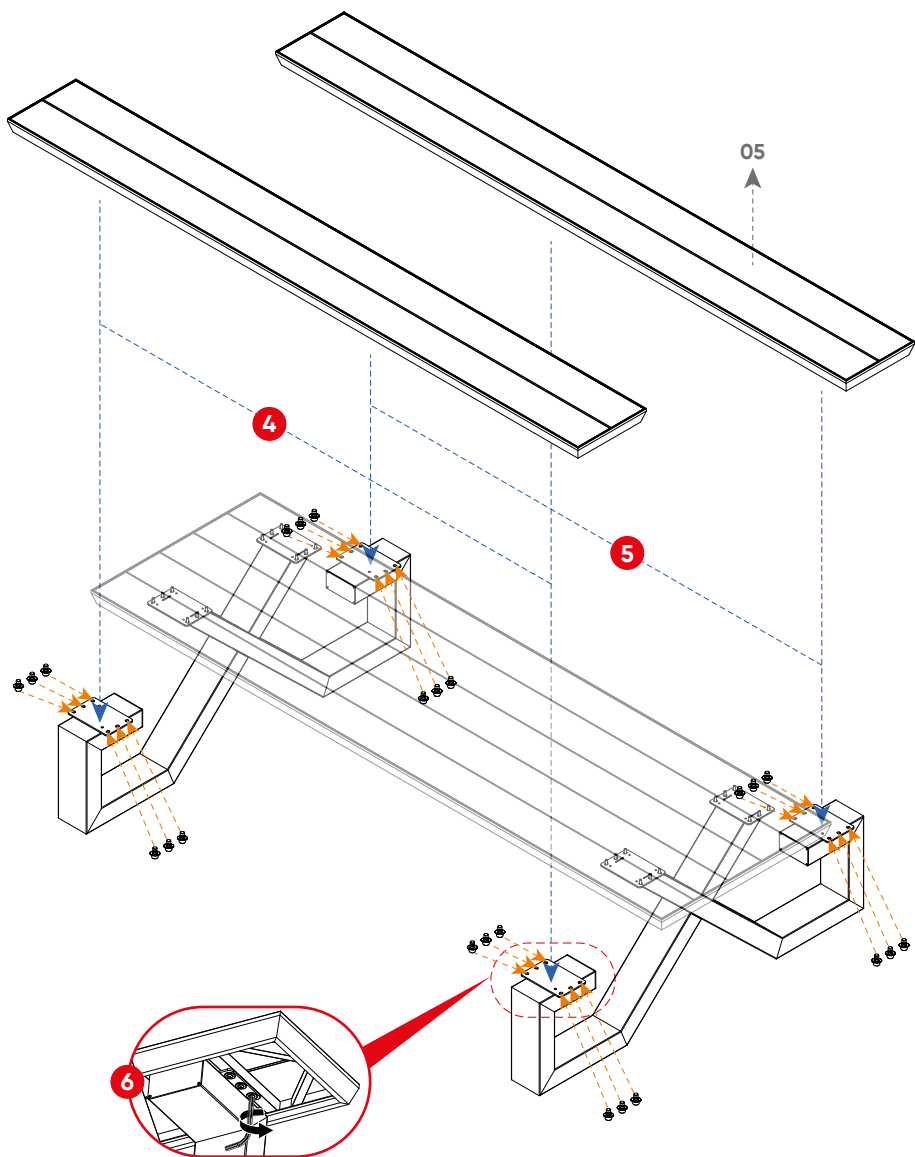
- |   |  |
|---|--|
| 01. Leg Profile (x2)                        | 06. Allen (x1)                             |
| 02. Table Top (x1)                          | 07. Intermediate Foot Support Profile (x2) |
| 03. M8x30 Allen Bolt (x48) + (x12 optional) | 08. Bingo Foot (x2)                        |
| 04. Washer (x48) + (x12 optional)           | 09. Clamp (x4)                             |
| 05. Table Seats (x2)                        | 10. EPDM Tape (x4)                         |



## 2. Assembly Stages

Please do not damage the surface when opening the packaging.

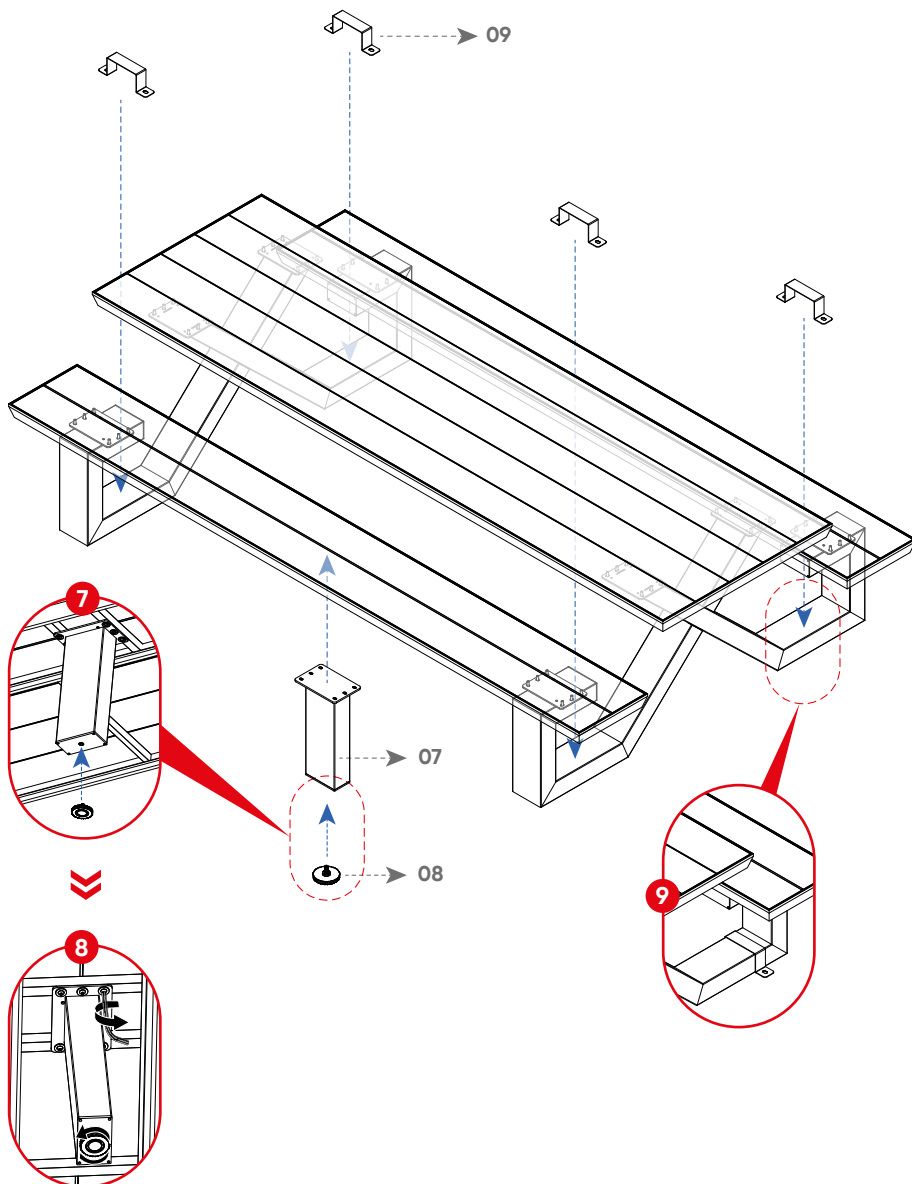


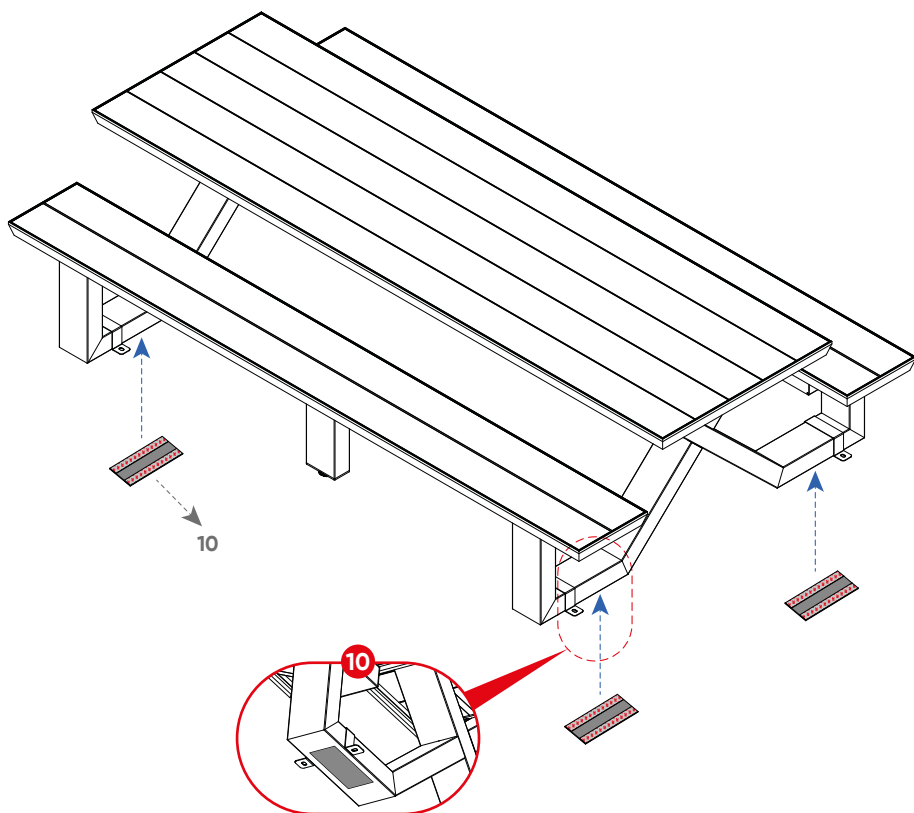


Items 7 and 8 are applied to picnic tables measuring 3 meters and above.

**Optional!!**

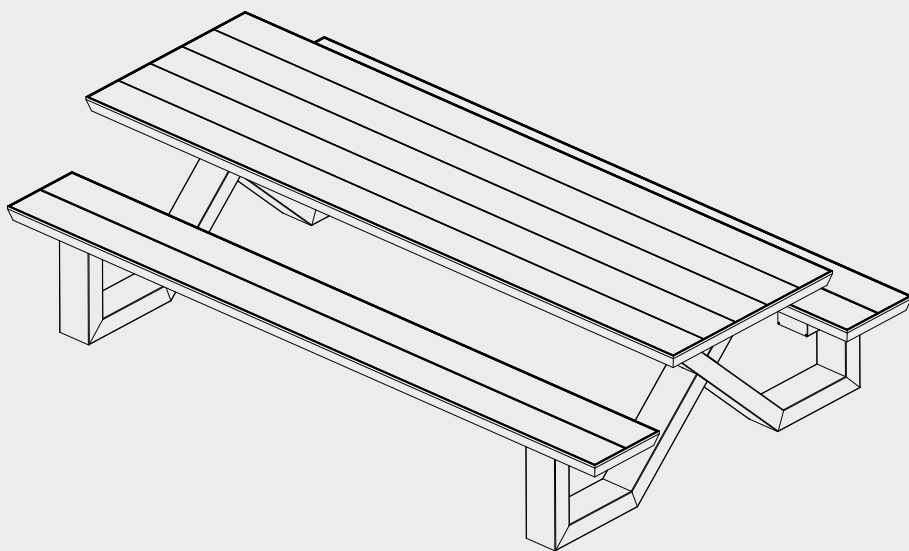
Clamps and EPDM Tape are optionally available and can be added to or removed from the picnic table upon request.







**PATIOSPHERE**



**PatioSphere.com**